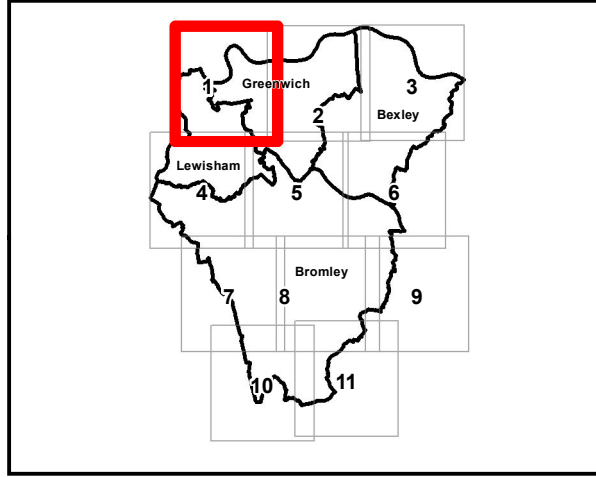




**Key Plan**





Aberdeen House  
South Road  
Haywards Heath  
West Sussex  
RH16 4NG  
United Kingdom



[www.jbaconsulting.com](http://www.jbaconsulting.com)

for

**SOUTH-EAST LONDON LOCAL FLOOD RISK MANAGEMENT STRATEGY**  
Historical flooding

(Tile Number 1 of 11)

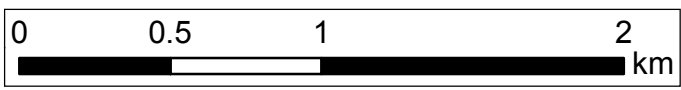
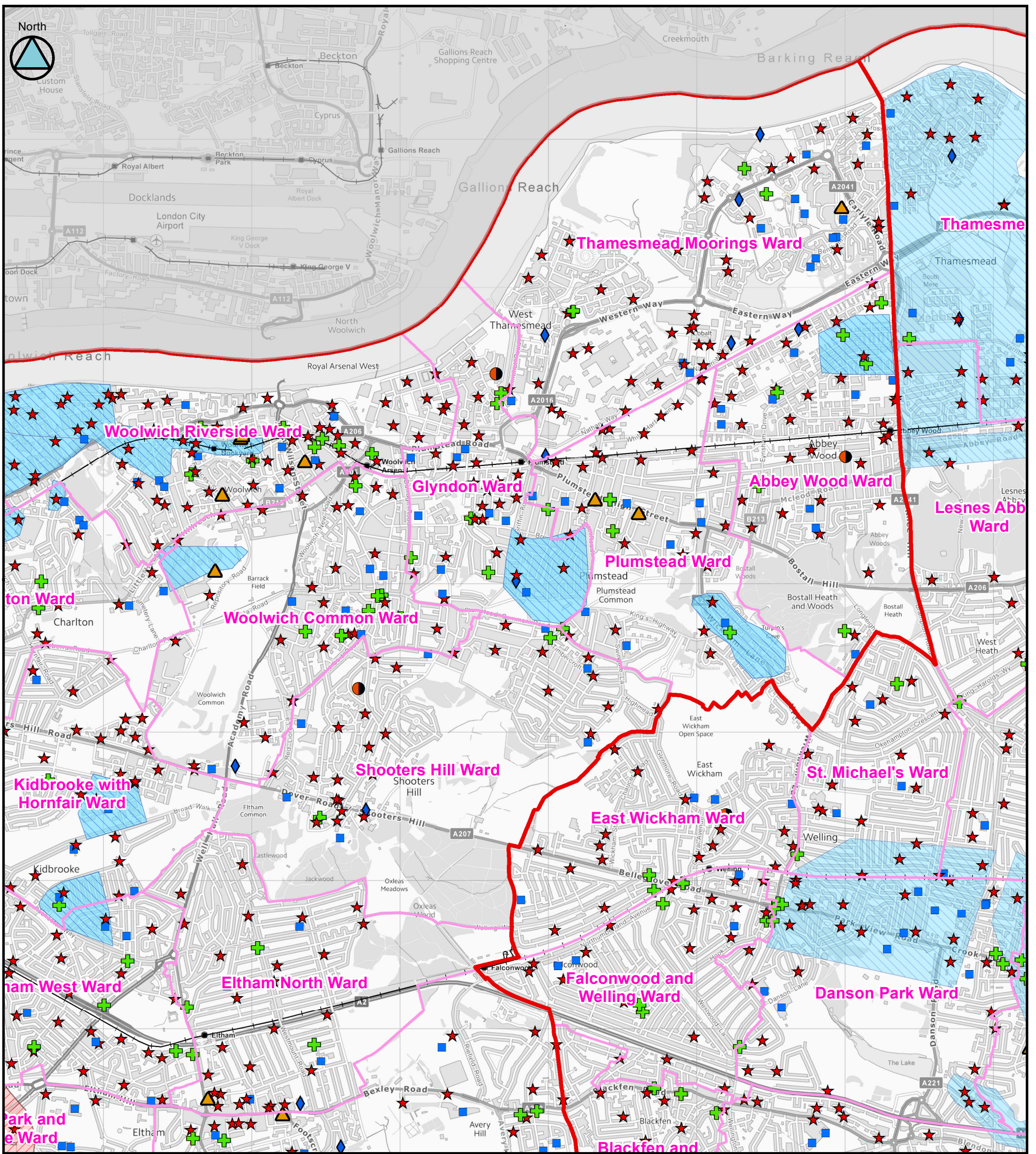
Contains Ordnance Survey data © Crown copyright and database right 2014.

This document is the property of Jeremy Benn Associates Ltd. It shall not be reproduced in whole or in part, nor disclosed to a third party, without the permission of Jeremy Benn Associates Ltd.

Original @ A3

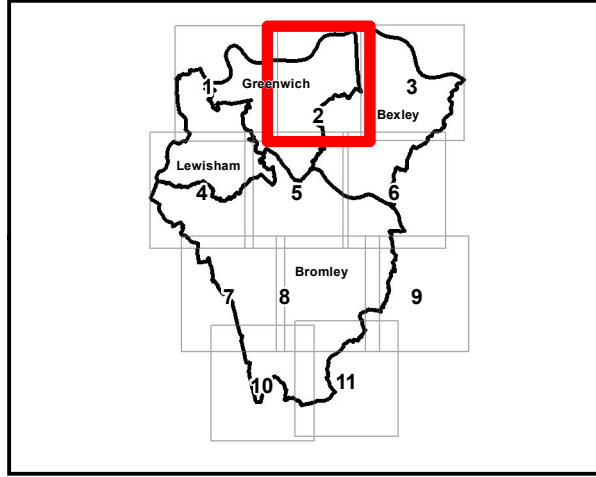
t +44 (0)1444 473 652  
f +44 (0)8458 627 772  
e info@jbaconsulting.com

Offices at Colchester, Doncaster, Edinburgh,  
Haywards Heath, Limerick, Newcastle, Newport, Salfaire, Skipton,  
Tadcaster, Thirsk, Wallingford and Warrington



Legend	
	Wards
	South-East London Boroughs
	Education
	Healthcare and Medical Services
	Emergency Services
	Nursing, Retirement and Rest Homes
	Water Utilities
	Electricity and Gas / Communications
	Railway Stations
	Heritage Site
	Railway Track
	EA Historic Flood Map
	SWMP

Key Plan



Aberdeen House  
South Road  
Haywards Heath  
West Sussex  
RH16 4NG  
United Kingdom

[www.jbaconsulting.com](http://www.jbaconsulting.com)

t +44 (0)1444 473 652  
f +44 (0)8458 627 772  
e info@jbaconsulting.com

---

for

## SOUTH-EAST LONDON LOCAL FLOOD RISK MANAGEMENT STRATEGY

### Historical flooding

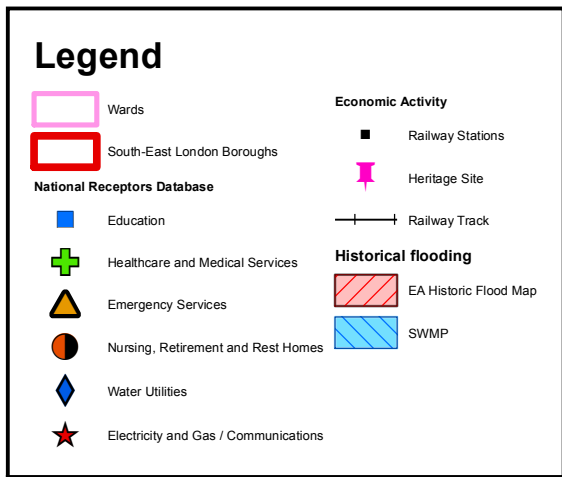
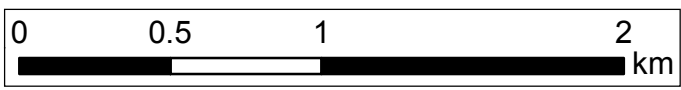
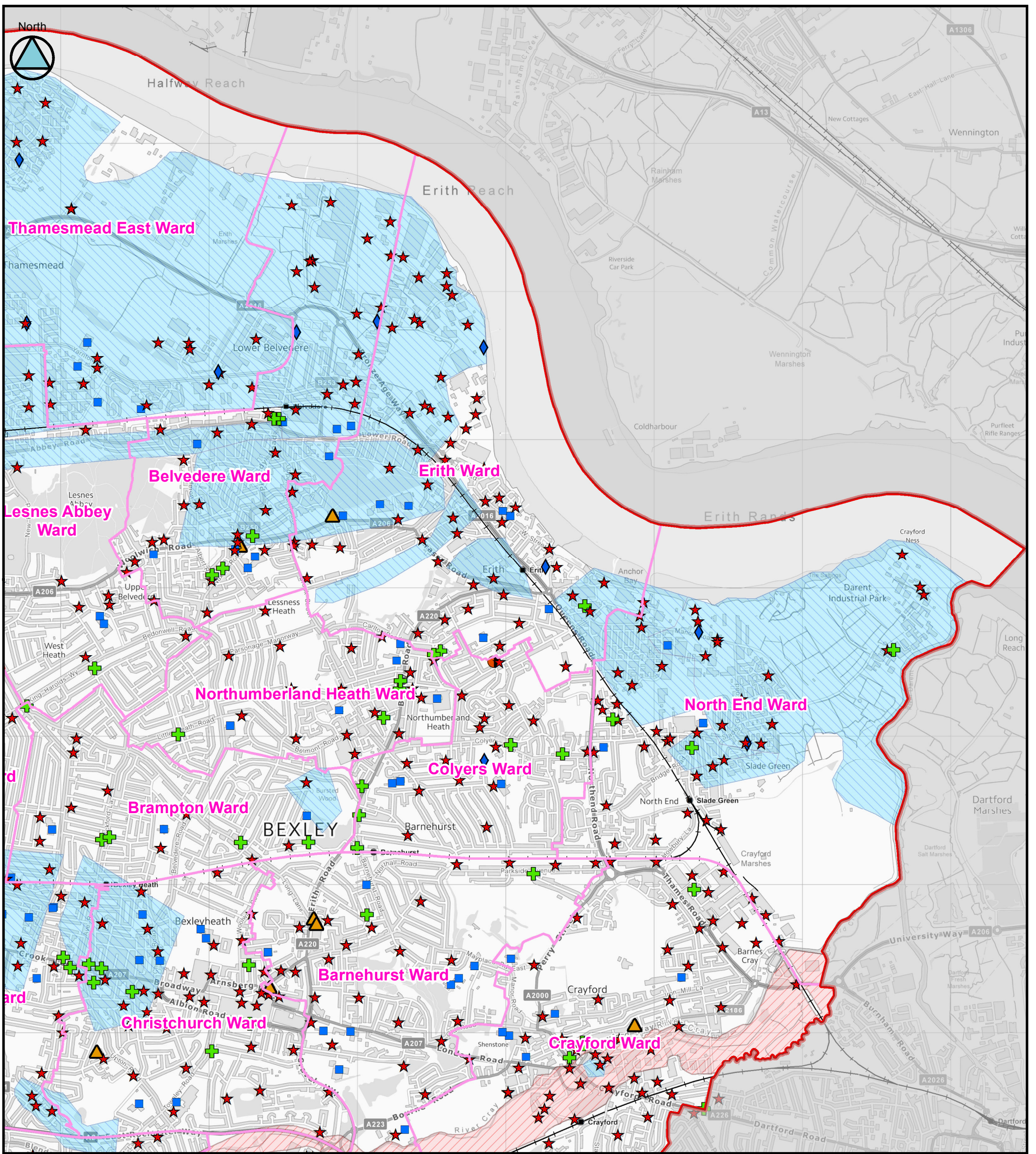
---

(Tile Number 2 of 11)

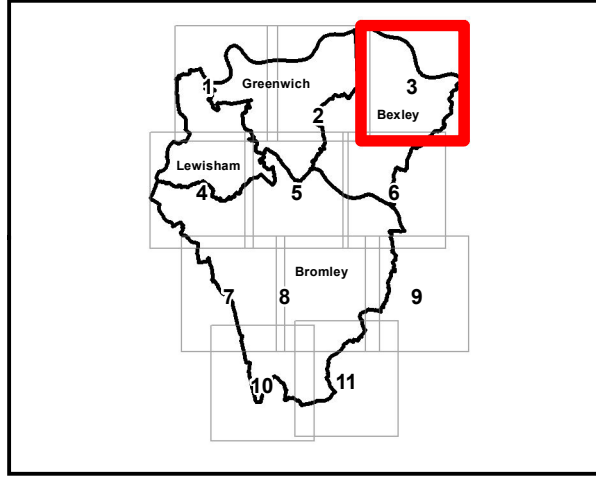
Contains Ordnance Survey data © Crown copyright and database right 2014.

This document is the property of Jeremy Benn Associates Ltd. It shall not be reproduced in whole or in part, nor disclosed to a third party, without the permission of Jeremy Benn Associates Ltd.

Original @ A3



Key Plan



Aberdeen House  
South Road  
Haywards Heath  
West Sussex  
RH16 4NG  
United Kingdom

[www.jbaconsulting.com](http://www.jbaconsulting.com)

for

## SOUTH-EAST LONDON LOCAL FLOOD RISK MANAGEMENT STRATEGY

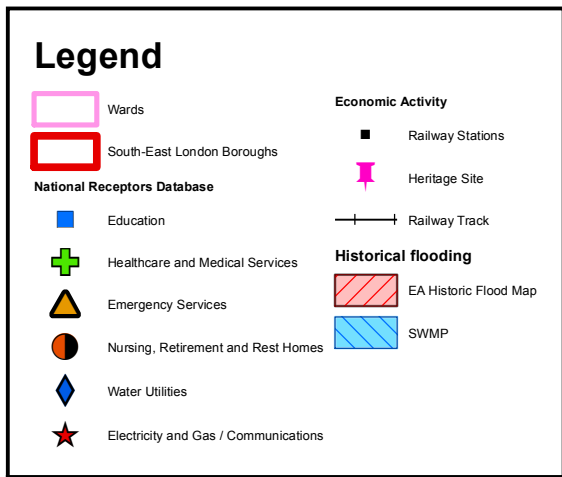
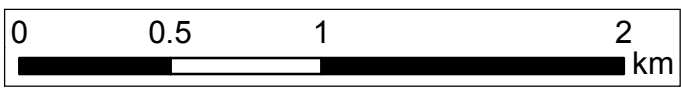
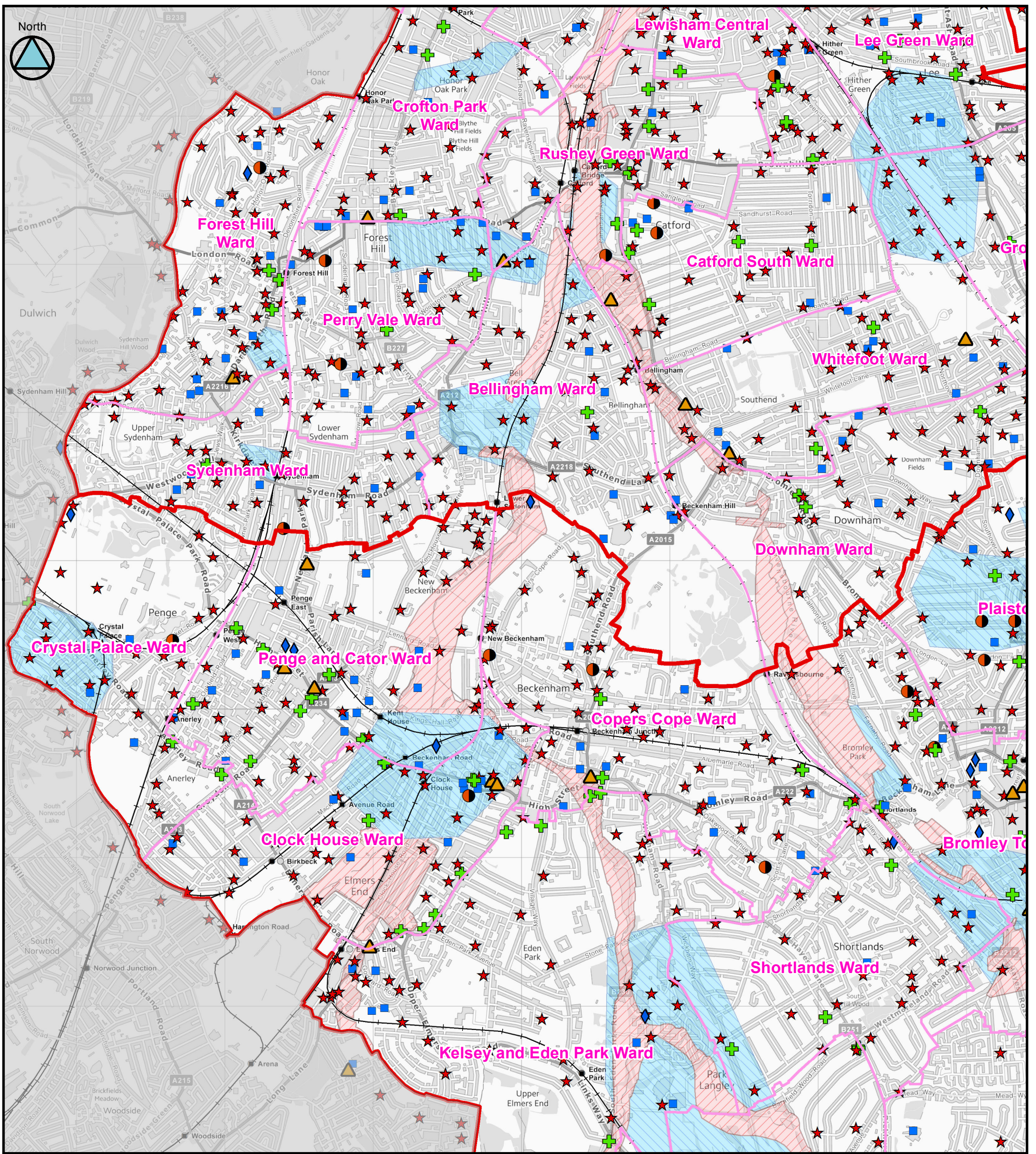
### Historical flooding

(Tile Number 3 of 11)

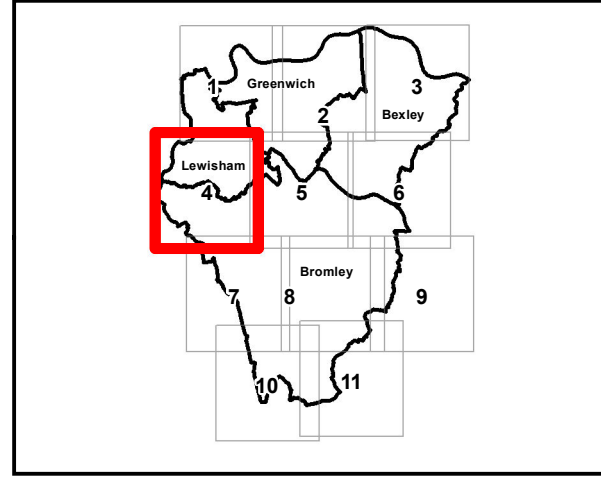
Contains Ordnance Survey data © Crown copyright and database right 2014.

This document is the property of Jeremy Benn Associates Ltd. It shall not be reproduced in whole or in part, nor disclosed to a third party, without the permission of Jeremy Benn Associates Ltd.

Original @ A3



Key Plan



Aberdeen House  
South Road  
Haywards Heath  
West Sussex  
RH16 4NG  
United Kingdom

[www.jbaconsulting.com](http://www.jbaconsulting.com)

for

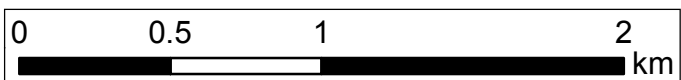
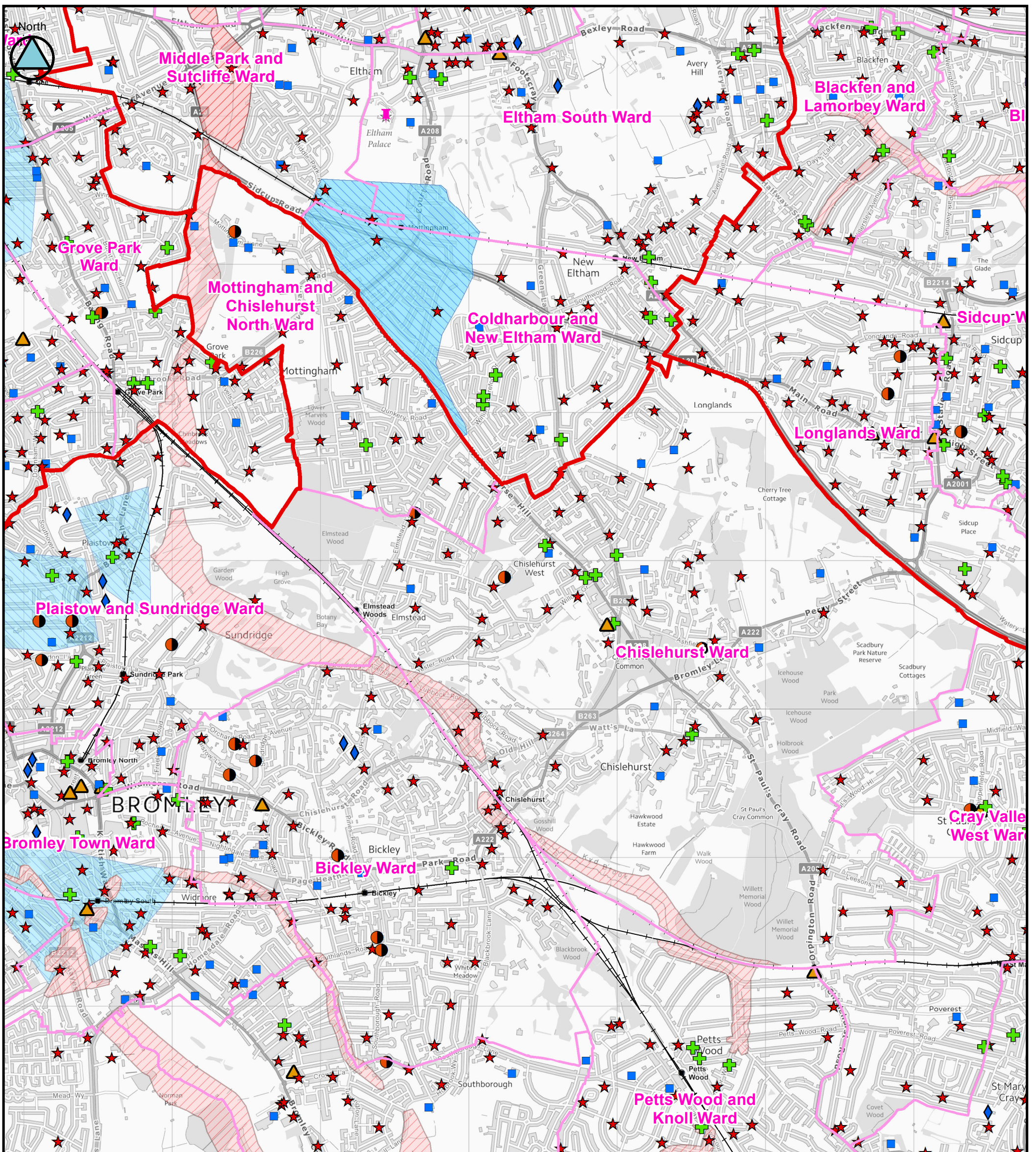
**SOUTH-EAST LONDON LOCAL FLOOD RISK MANAGEMENT STRATEGY**  
Historical flooding

(Tile Number 4 of 11)

Contains Ordnance Survey data © Crown copyright and database right 2014.

This document is the property of Jeremy Benn Associates Ltd. It shall not be reproduced in whole or in part, nor disclosed to a third party, without the permission of Jeremy Benn Associates Ltd.

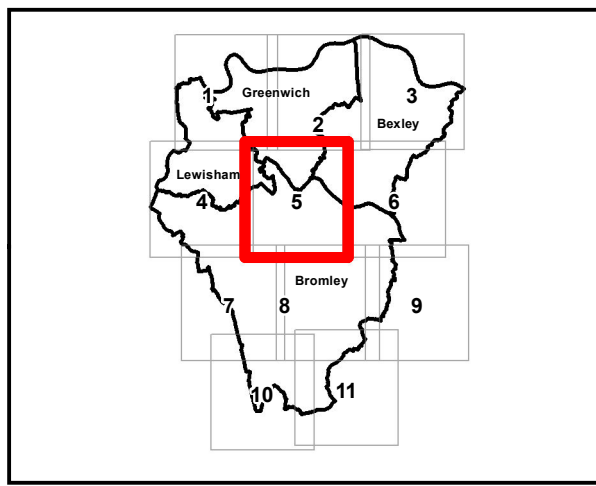
Original @ A3



### Legend

Wards	Economic Activity
South-East London Boroughs	Railway Stations
National Receptors Database	Heritage Site
Education	Railway Track
Healthcare and Medical Services	Historical flooding
Emergency Services	EA Historic Flood Map
Nursing, Retirement and Rest Homes	SWMP
Water Utilities	
Electricity and Gas / Communications	

Key Plan



Aberdeen House  
South Road  
Haywards Heath  
West Sussex  
RH16 4NG  
United Kingdom

[www.jbaconsulting.com](http://www.jbaconsulting.com)

for

## SOUTH-EAST LONDON LOCAL FLOOD RISK MANAGEMENT STRATEGY

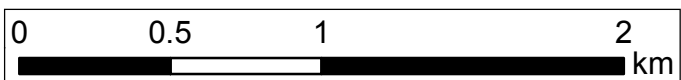
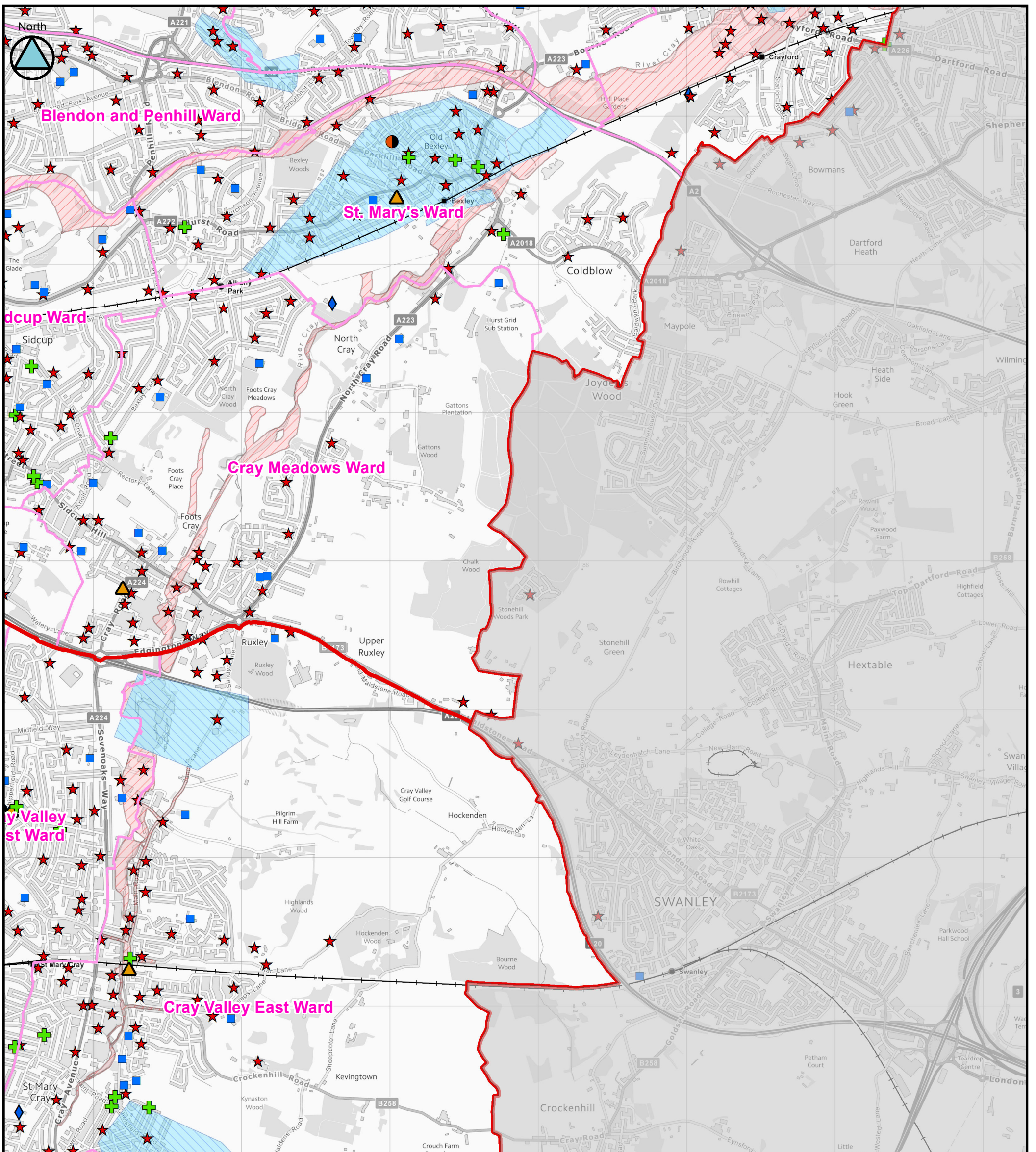
### Historical flooding

(Tile Number 5 of 11)

Contains Ordnance Survey data © Crown copyright and database right 2014.

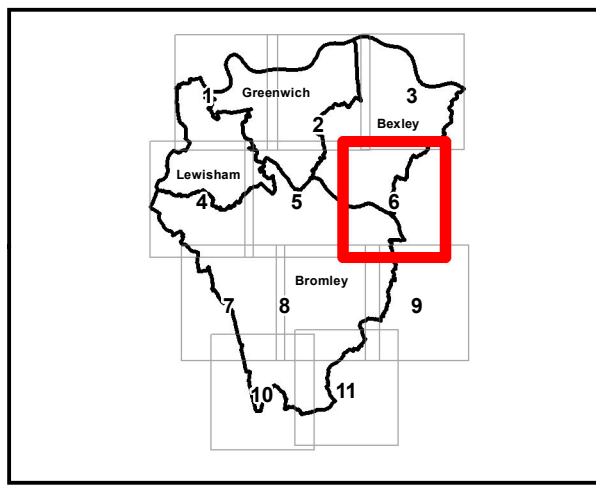
This document is the property of Jeremy Benn Associates Ltd. It shall not be reproduced in whole or in part, nor disclosed to a third party, without the permission of Jeremy Benn Associates Ltd.

Original @ A3



Legend	
	Wards
	South-East London Boroughs
<b>National Receptors Database</b>	
	Education
	Healthcare and Medical Services
	Emergency Services
	Nursing, Retirement and Rest Homes
	Water Utilities
	Electricity and Gas / Communications
<b>Economic Activity</b>	
	Railway Stations
	Heritage Site
	Railway Track
<b>Historical flooding</b>	
	EA Historic Flood Map
	SWMP

Key Plan



**JBA**  
consulting

Aberdeen House  
South Road  
Haywards Heath  
West Sussex  
RH16 4NG  
United Kingdom

[www.jbaconsulting.com](http://www.jbaconsulting.com)

Offices at Coleshill, Doncaster, Edinburgh,  
Haywards Heath, Limerick, Newcastle, Newport, Salfaire, Skipton,  
Tadcaster, Thirsk, Wallingford and Warrington

for

## SOUTH-EAST LONDON LOCAL FLOOD RISK MANAGEMENT STRATEGY

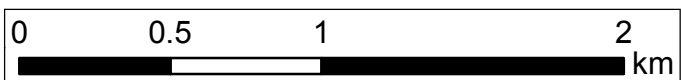
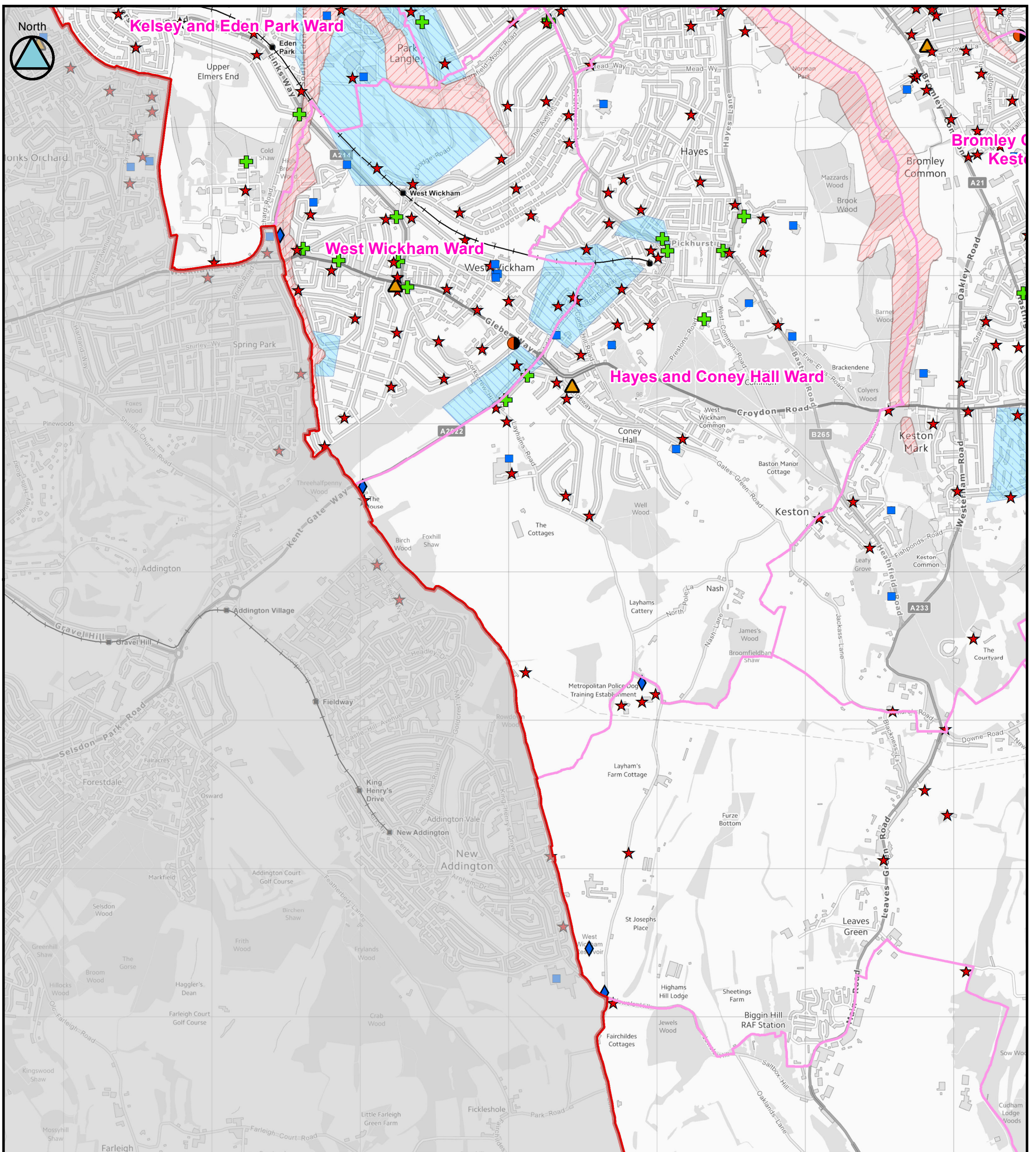
### Historical flooding

(Tile Number 6 of 11)

Contains Ordnance Survey data © Crown copyright and database right 2014.

This document is the property of Jeremy Benn Associates Ltd. It shall not be reproduced in whole or in part, nor disclosed to a third party, without the permission of Jeremy Benn Associates Ltd.

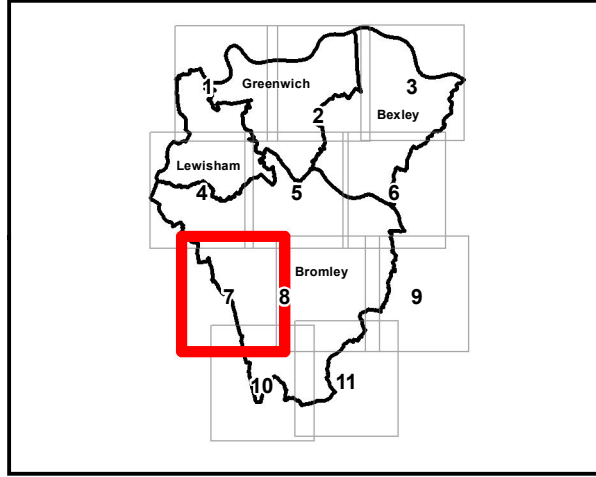
Original @ A3




### Legend

Wards	<b>Economic Activity</b>
South-East London Boroughs	Railway Stations
<b>National Receptors Database</b>	Heritage Site
Education	Railway Track
Healthcare and Medical Services	<b>Historical flooding</b>
Emergency Services	EA Historic Flood Map
Nursing, Retirement and Rest Homes	SWMP
Water Utilities	
Electricity and Gas / Communications	


Key Plan





Aberdeen House  
South Road  
Haywards Heath  
West Sussex  
RH16 4NG  
United Kingdom

[www.jbaconsulting.com](http://www.jbaconsulting.com)



for

## SOUTH-EAST LONDON LOCAL FLOOD RISK MANAGEMENT STRATEGY

### Historical flooding

(Tile Number 7 of 11)

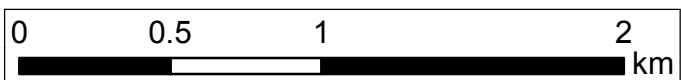
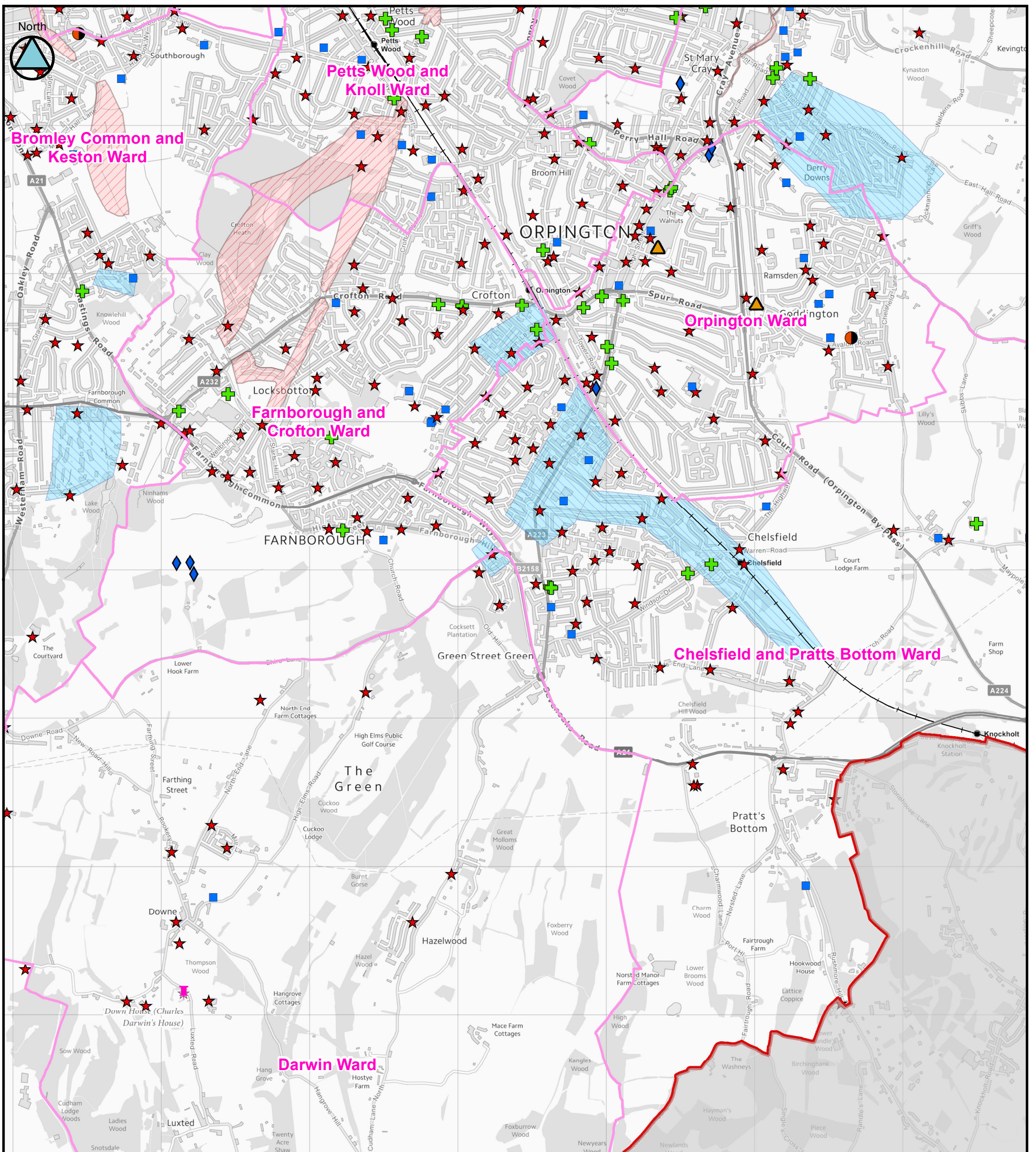
Contains Ordnance Survey data © Crown copyright and database right 2014.

This document is the property of Jeremy Benn Associates Ltd. It shall not be reproduced in whole or in part, nor disclosed to a third party, without the permission of Jeremy Benn Associates Ltd.

Original @ A3

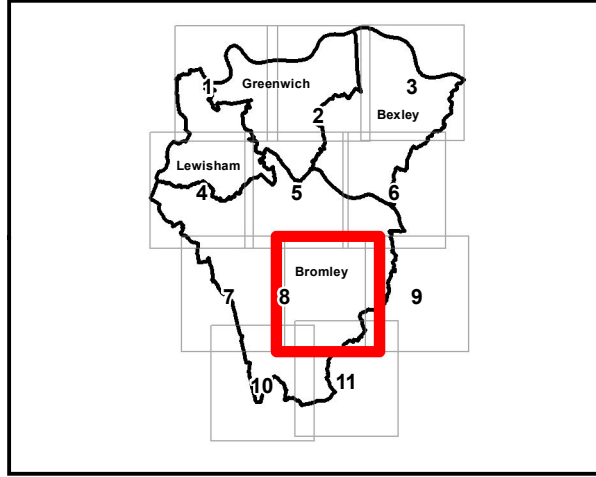
t +44 (0)1444 473 652  
f +44 (0)8458 627 772  
e [info@jbaconsulting.com](mailto:info@jbaconsulting.com)

Offices at Colchester, Doncaster, Edinburgh, Haywards Heath, Limerick, Newcastle, Newport, Salfaire, Skipton, Tadcaster, Thirsk, Wallingford and Warrington



Legend	
	Wards
	South-East London Boroughs
<b>National Receptors Database</b>	
	Education
	Healthcare and Medical Services
	Emergency Services
	Nursing, Retirement and Rest Homes
	Water Utilities
	Electricity and Gas / Communications
<b>Economic Activity</b>	
	Railway Stations
	Heritage Site
	Railway Track
<b>Historical flooding</b>	
	EA Historic Flood Map
	SWMP

Key Plan



**JBA consulting**

Aberdeen House  
South Road  
Haywards Heath  
West Sussex  
RH16 4NG  
United Kingdom

[www.jbaconsulting.com](http://www.jbaconsulting.com)

Offices at Coleshill, Doncaster, Edinburgh,  
Haywards Heath, Limerick, Newcastle, Newport, Saltire, Skipton,  
Tadcaster, Thirsk, Wallingford and Warrington

---

for

## SOUTH-EAST LONDON LOCAL FLOOD RISK MANAGEMENT STRATEGY

### Historical flooding

---

(Tile Number 8 of 11)

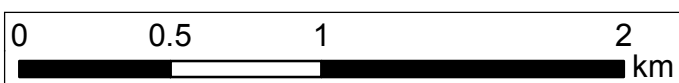
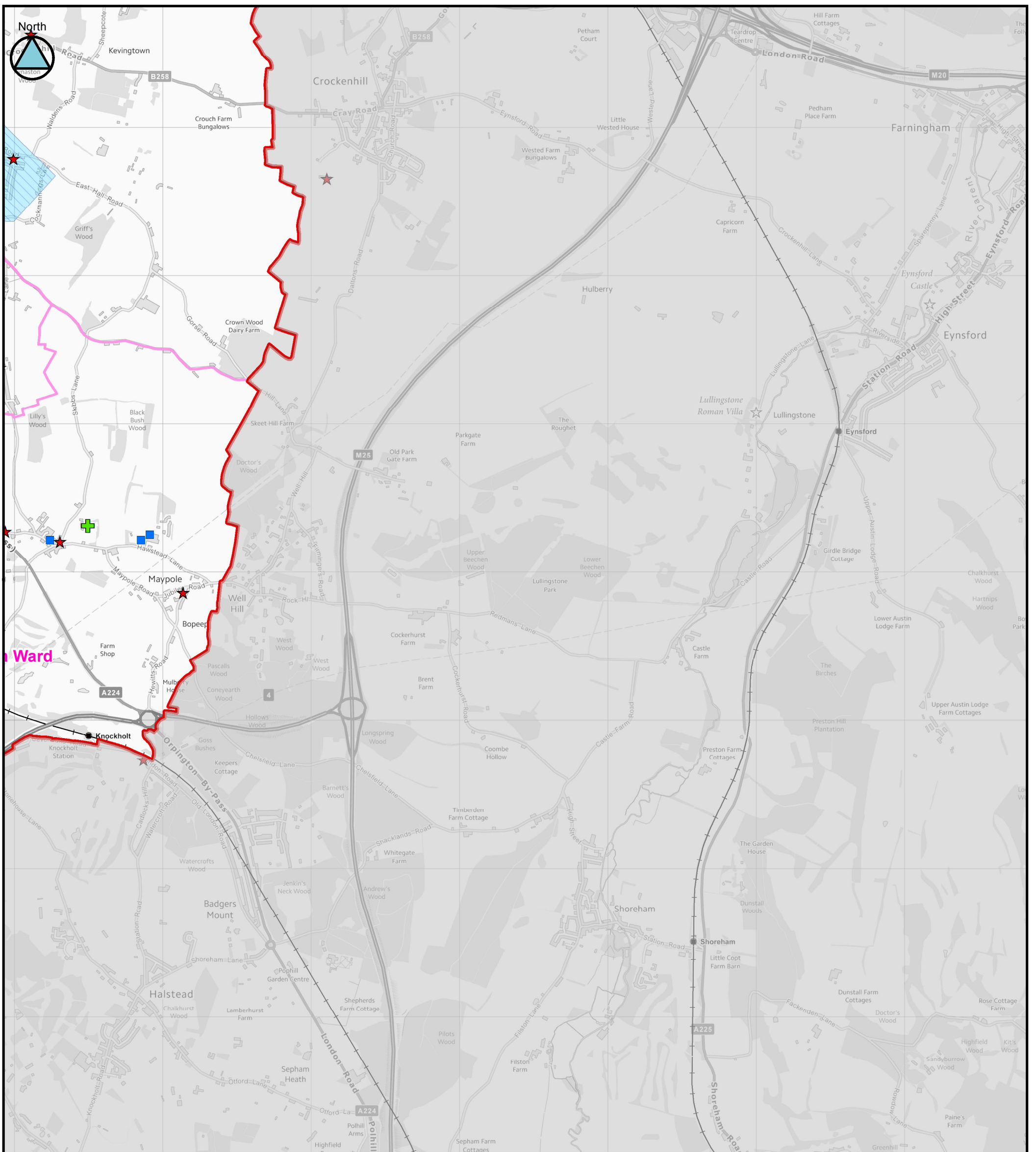
Contains Ordnance Survey data © Crown copyright and database right 2014.

This document is the property of Jeremy Benn Associates Ltd. It shall not be reproduced in whole or in part, nor disclosed to a third party, without the permission of Jeremy Benn Associates Ltd.

Original @ A3

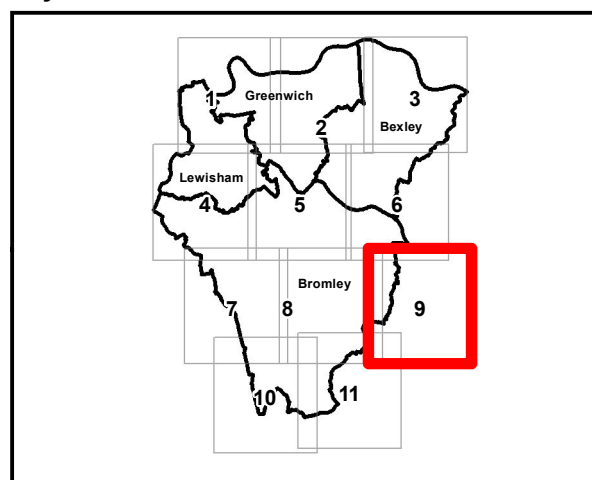
t +44 (0)1444 473 652  
f +44 (0)8458 627 772  
e info@jbaconsulting.com





Legend	
	Wards
	South-East London Boroughs
National Receptors Database	
	Education
	Healthcare and Medical Services
	Emergency Services
	Nursing, Retirement and Rest Homes
	Water Utilities
	Electricity and Gas / Communications
Economic Activity	
	Railway Stations
	Heritage Site
	Railway Track
Historical flooding	
	EA Historic Flood Map
	SWMP

Key Plan



Aberdeen House  
South Road  
Haywards Heath  
West Sussex  
RH16 4NG  
United Kingdom



[www.jbaconsulting.com](http://www.jbaconsulting.com)

t +44 (0)1444 473 652  
f +44 (0)8458 627 772  
e [info@jbaconsulting.com](mailto:info@jbaconsulting.com)

for

## SOUTH-EAST LONDON LOCAL FLOOD RISK MANAGEMENT STRATEGY

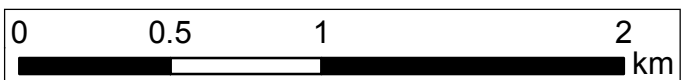
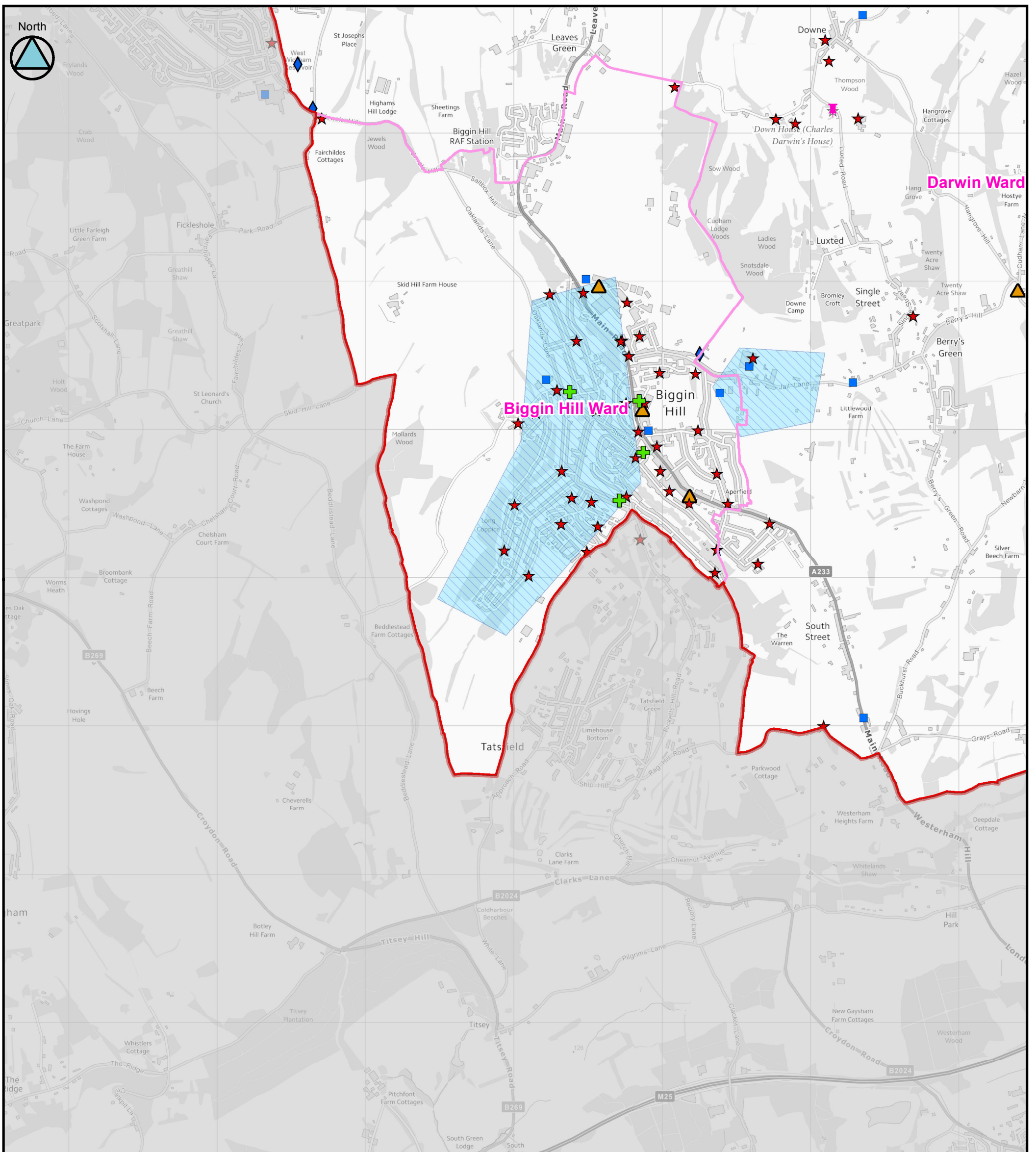
### Historical flooding

(Tile Number 9 of 11)

Contains Ordnance Survey data © Crown copyright and database right 2014.

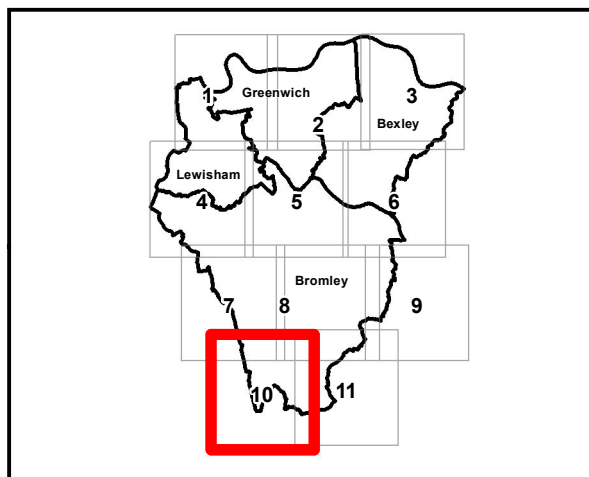
This document is the property of Jeremy Benn Associates Ltd. It shall not be reproduced in whole or in part, nor disclosed to a third party, without the permission of Jeremy Benn Associates Ltd.

Original @ A3



Legend	
	Wards
	South-East London Boroughs
National Receptors Database	
	Education
	Healthcare and Medical Services
	Emergency Services
	Nursing, Retirement and Rest Homes
	Water Utilities
	Electricity and Gas / Communications
Economic Activity	
	Railway Stations
	Heritage Site
	Railway Track
Historical flooding	
	EA Historic Flood Map
	SWMP

Key Plan



**JBA**  
consulting

Aberdeen House  
South Road  
Haywards Heath  
West Sussex  
RH16 4NG  
United Kingdom

[www.jbaconsulting.com](http://www.jbaconsulting.com)

Offices at Coleshill, Doncaster, Edinburgh,  
Haywards Heath, Limerick, Newcastle, Newport, Salfaire, Skipton,  
Tadcaster, Thirsk, Wallingford and Warrington

for

## SOUTH-EAST LONDON LOCAL FLOOD RISK MANAGEMENT STRATEGY

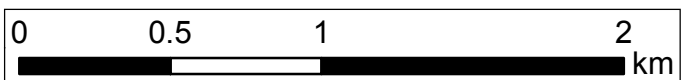
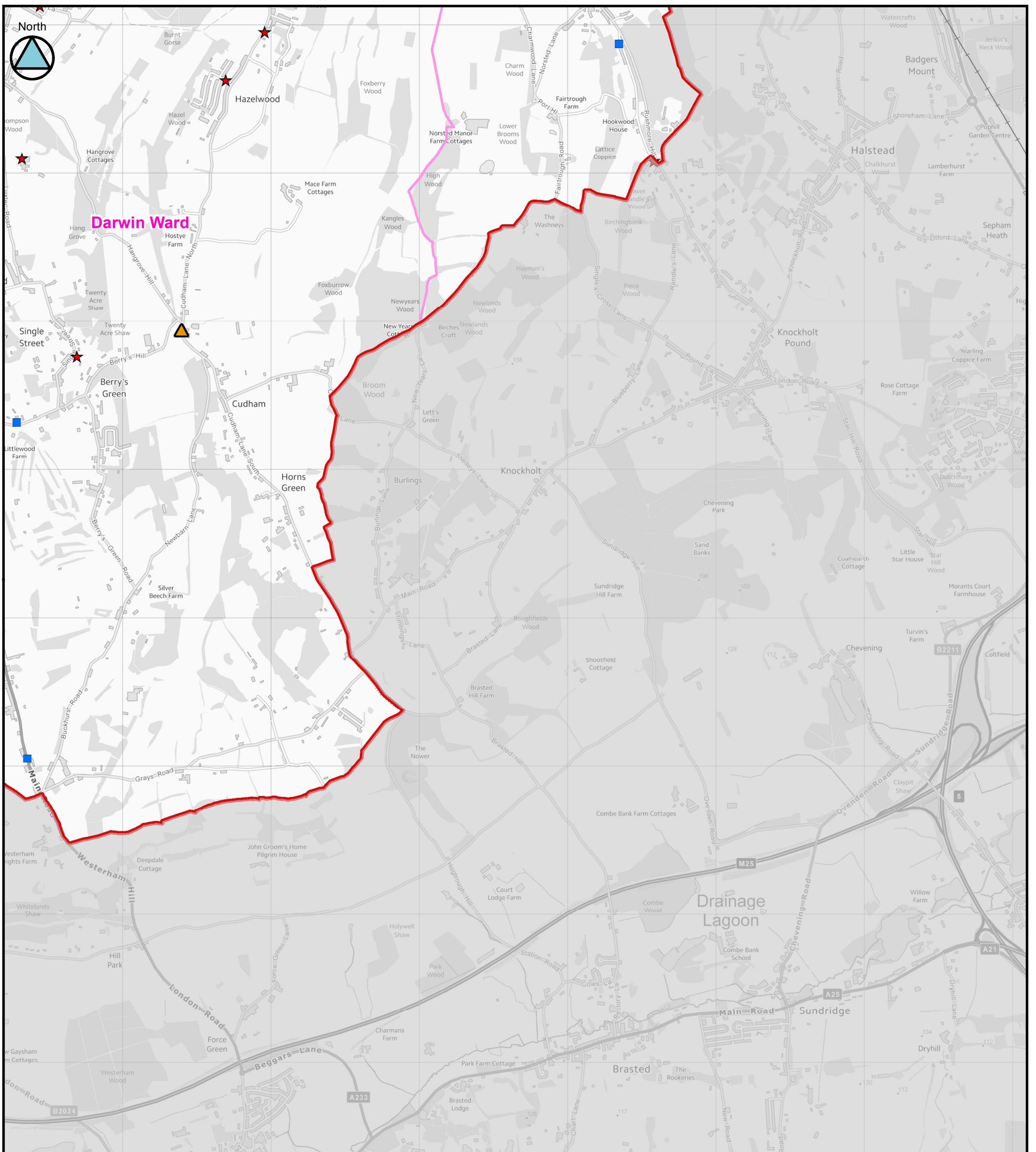
### Historical flooding

(Tile Number 10 of 11)

Contains Ordnance Survey data © Crown copyright and database right 2014.

This document is the property of Jeremy Benn Associates Ltd. It shall not be reproduced in whole or in part, nor disclosed to a third party, without the permission of Jeremy Benn Associates Ltd.

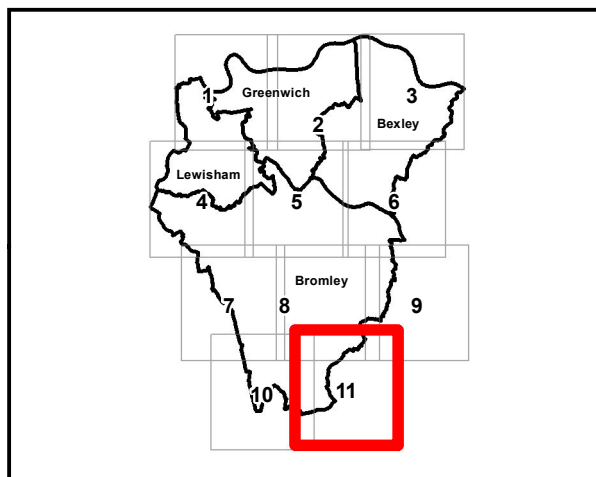
Original @ A3




### Legend


Wards	<b>Economic Activity</b>
South-East London Boroughs	Railway Stations
<b>National Receptors Database</b>	Heritage Site
Education	Railway Track
Healthcare and Medical Services	<b>Historical flooding</b>
Emergency Services	EA Historic Flood Map
Nursing, Retirement and Rest Homes	SWMP
Water Utilities	
Electricity and Gas / Communications	

Key Plan





Aberdeen House  
South Road  
Haywards Heath  
West Sussex  
RH16 4NG  
United Kingdom



[www.jbaconsulting.com](http://www.jbaconsulting.com)

for

## SOUTH-EAST LONDON LOCAL FLOOD RISK MANAGEMENT STRATEGY

### Historical flooding

(Tile Number 11 of 11)

Contains Ordnance Survey data © Crown copyright and database right 2014.

This document is the property of Jeremy Benn Associates Ltd. It shall not be reproduced in whole or in part, nor disclosed to a third party, without the permission of Jeremy Benn Associates Ltd.

Original @ A3

t +44 (0)1444 473 652  
f +44 (0)8458 627 772  
e info@jbaconsulting.com

Offices at Coleshill, Doncaster, Edinburgh,  
Haywards Heath, Limerick, Newcastle, Newport, Saltire, Skipton,  
Tadcaster, Thirsk, Wallingford and Warrington